



Accent Tables  
TV Units &  
Shelves

Made in

**Tepe Home**<sup>®</sup>

A photograph of the Tepe Home storefront at dusk. The building has a dark facade with large glass windows. The interior is warmly lit, showing a modern living space with a sofa, armchairs, and a dining table. The sky is a deep blue, and the ground in front of the building is wet, reflecting the lights from the store.

# HH Tepe Home<sup>®</sup>

A HALF CENTURY  
OF PRODUCTION &  
INDUSTRY  
EXPERIENCE

Developing fashionable  
homes leveraging on our  
5 decades of excellence  
in production.

# OUR CUSTOMERS ARE VALUABLE

## FIRST CLASS FABRIC & MATERIAL

One of the prime factor in the upholstered furniture is the quality of fabric. All the fabrics are quality checked when they arrive at us and only the approved ones are accepted. In our stores we offer more than hundreds of fabrics to our customers that are quality checked and suit every taste.

## CUSTOMIZED PRODUCTION & FIRST CLASS CRAFTSMANSHIP

All processes needed for production such as metal parts, chrome plating, oven drying, polishing and lacquering finishes and all veneered products are manufactured in our factory.

Our upholstered furniture is manufactured independently from other standard production lines and entirely handcrafted using cellular manufacturing system.

Our customers can both select the fabric- and leg-color of the furniture available in our product range to their taste and all of these orders are tracked until the packing stage.

The fabric order is placed by the name of the customer, then the following processes, the dispatch of fabric to the plant, its cutting, sewing, tagging and packing are also carried out by that specific customer name.

## 60.000 M<sup>2</sup> PLANT AREA

From raw material processing to distribution, Tepe Home is an integrated company that exemplifies best practices upstream and downstream operations.

## TRENDY COLLECTIONS

«A delightful sensuality with industrial tones», «Being timeless with a little touch of classic», «Blending the sense of the casual with the element of style»... our collections offer you this world whether you are in urban plazas, sparkling skyscrapers, waterfront villas or elegant townhouses.

## 5.000 SKU'S / ITEMS MANUFACTURED

Offering most exceptional and stylish products to our valued customers.

Thanks to the broad product range, we are able to meet all needs of a home and office include outdoor furniture, kitchen cabinets, cabinet systems, gift ware, home textiles, bathroom accessories, lighting and carpet.

Just now...  
There is a new life ahead of you

To find the style that suits you  
and to pass it on to your living spaces, we are here.



**Tepe Home**<sup>®</sup>

## Table Of Contents

- TV UNITS
- CONSOLE TABLES
- COFFEE, SIDE, AND NESTING TABLES
- METAL-FRAMED ACCENT TABLES
- BOOKCASES & SHELVING
- HALLWAY AND OTHER STORAGE UNITS

# TV UNITS

A significant portion of our lives is spent in our living rooms.

So, it goes without saying, when it comes to decor, TV consoles are not only serving the function of placing your TV's in a comfortable height and providing storage, but they also give opinion about your style.

With a wide variety of styles, like any other kind of our living room furniture, you can find sleek contemporary, glamorous, classy, country or crispy and clean designs to express yourself and your home's style.

About both the functionality and aesthetics; you can choose a TV console with drawers or additional units to store all manner of your stuff, and you can also use the top of them to display home decor items to add some personal touch.



# BRANKA



**BRANKA TV UNIT**  
BRN02TV665

Made of solid wood (fir)  
Wire brushing on exterior surfaces  
Water based polish on all surfaces  
2xDrawers  
Metal handles in aged brass color  
Decorative metal accessories on the side of the top.  
W: 180 D: 46 H: 45cm

If you are a fan of rustic-country style and love to add natural sense to your living room, Branka is your best choice.

Crafted from 100% solid wood, Branka Tv Unit is built not only for the long-lasting service but also for decorative and stylish purpose. With its water based polish, Branka is also safe for home and friendly to the human body.



Position Branka Bench in living room as a TV stand or mini-shelf for your books and magazines, bedroom as an ottoman of your bedstead, your entryway as a shoe cabinet, or kitchen as a mini-cabinet for anything from media to decor.



**BRANKA BENCH**  
BRN01TV665

Made of solid wood (fir)  
Wire brushing and water based  
polish on all surfaces  
Decorative metal accessories  
on the side of the top.  
W: 180 D: 46 H: 45cm



**GLORIA TV UNIT**  
GLR01TV862  
Frame & Doors: Solid oak veneered 18mm MDF  
Color: Black lacquered, aged corners  
Legs: Solid wood, Handles: Aged metal  
W: 209 D: 50 H: 58 cm

## GLORIA

Based on mid-century style which offer warm and inviting spaces in your home with its high-quality craftsmanship, Gloria has touch of rustic French country flair in black stain with aged edges too.



**VICTORIA TV UNIT**  
VIC01TV867  
Top, Frame & Front: Solid oak veneered MDF  
Color: Smooth antique white, aged corners  
Legs: Solid wood, antique white stained, Handles: Aged brass  
W: 209 D: 50 H: 58 cm

## VICTORIA

A striking example of a sturdy, versatile & stylish range, the collection VICTORIA is beautifully made by using smooth antique white finish with solid oak veneer and aged brass handles, which offers dramatic addition to your living room.



**NATURA TV UNIT**  
NTR01TV845  
Top, Frame & Front : Solid oak veneered 18mm MDF in black lacquer  
Center Panels of the Doors: Rattan  
Legs: Solid wood  
Handles: Black stained metal  
W: 200 D: 46 H: 60 cm

## NATURA

Best one from our exclusive new range with solid wood and rustic touch, Natura has been designed to offer maximum ergonomic and visual comfort.



**NATURA TV UNIT**  
NTR01TV845  
W: 200 D: 46 H: 60



**CARMEN TV UNIT**  
CRM01TV688  
Frame & Fronts: Textured melamine veneered particle board  
Table Top and shelf: Dark-brown marble-look laminate  
Color: Black lacquered, aged corners  
Legs: Black stained metal  
W:220 D:47 H:60 cm

## CARMEN

Carmen TV Unit has been specially designed for those with a love of modern design. It brings an atmosphere of visual chic to your room, meets your needs, and enriches you modern style with its characteristics and dynamism.



**PATRIZIA TV UNIT**  
PTR01TV791  
Top, Frame & Front: Textured melamine veneered particle board  
Legs: Solid wood, Brown stained  
1 drawer w/ soft closing system  
w/o handles  
W:200 D:50 H:50cm

## PATRIZIA

We all love the idea of plainness because of its simplicity. Inspired from modern influence, Patrizia gives a feel of peace and serenity in your space. TV Unit is characterized by combination of angled shape of front corners with walnut veneered melamine, which give its own unique flavor.



**ELEGANT TV UNIT**  
ELG01TV512  
Top, Frame & Front: : Melamine veneered particle board  
Legs: Solid wood  
W:184 D:54 H:53cm

## ELEGANT

It is characterized by its combination of smooth walnut color, the flat top, and curved legs which give this TV Unit its own unique flavor. Stylish and elegant, as befits its name, Elegant represents an outstanding combination of excellent design.



**LANTANA TV UNIT**  
LNT01TV717  
Frame: Walnut veneered, natural stained  
2 Fronts: Smoky black glass w/ aluminum frame  
Top: Marble-look laminate, Legs: Solid wood, Handles: Black stained metal  
Function: Drawer w/ soft closing and push-to-open system  
W: 180 D: 53 H: 60 cm

## LANTANA

Lantana TV Unit combines soft shapes emphasizing the naturalness of the wood with glass-doors and laminated top with marble-look in its own essential style, where luxury meets fine craftsmanship.



**GAYDA TV UNIT**  
GYD11TV652  
Frame: Solid pine and wood veneered MDF  
Legs: Solid wood  
Handles: Aged gold stained  
W: 180 D: 57 H: 65 cm

## GAYDA

Gayda is traditional in style, incorporating the materials and textures of country houses of days past. It is practical and family-friendly, adding personality to everyday life. The details are carefully considered, the antique-style elements marrying perfectly with the artisan design.



**SIVA TV UNIT**  
SVA11TV795  
Frame, Drawer & Top: Textured melamine veneered particle board, Color: Walnut  
Fronts: Mat anthracite lacquered MDF, Handles & Legs: Solid wood, Brown stained  
Functions: One drawer w/ soft closing system, w/o handle  
W: 180 D: 50 H: 56 cm

## SIVA

Siva is a brilliant example of when the urban meets nature. It is a confident model designed for those who want to make a bold statement but in a subtle way. The lines are simple and clean. The handles follow the same theme, everything blended in a Zen-like harmony to create an overriding air of calm. Perfect for the contemporary urban dweller.





## ASTORIA

With its clean and linear shape, and the harmony of textured veneer and natural stone-look textured laminate, Astoria TV Unit brings a relaxed warmth of its character into your home.



### ASTORIA TV CONSOLE

AST01TV673, TV Console, W: 220 D: 50 H: 56 cm  
AST02TV673, Additional TV Module, W: 140 D: 30 H: 40 cm  
Frame; Textured melamine  
Top; Grey-brown marble-look laminate  
Functions; 2 drawers w/ soft closing system  
Handles; Bronze  
Legs; Solid wood, brown stained



## SANTINO

The warmth of brown veneer contrasts with the textured dark brown marble-look laminate and contemporary look of iron in this elegant Santino TV Unit. Its clean design keeps your rooms looking modern and the iron legs with slim lines make the base exceptionally sturdy.



### SANTINO TV CONSOLE

SNT01TV688, TV Console, W: 220 D: 47 H: 43 cm  
SNT02TV688, Additional TV Module, W: 55 D: 327H: 101 cm  
Frame; Textured melamine and dark-brown marble-look laminate  
Legs; Bended iron, black stained  
Functions; Drawers w/ soft closing system  
Additional TV Unit w/ hidden shelves on one side



### CARLO TV CONSOLE

CRL02TV726  
Frame & Top; Solid oak veneered MDF, walnut stained  
Legs; Solid wood, Handles; Aged metal  
Function; 3 drawers  
W: 200 D: 50 H: 56 cm



**PURE TV UNIT**  
PUR01TV739  
Frame, Shelves & Fronts: Textured melamine veneered, white  
Table Top: Textured melamine veneered, walnut  
Fronts: Country house barn door  
Handles: Metal  
W: 153 D: 48,3 H: 48,9 cm



**ISADORA TV UNIT**  
ISD01TV799  
Frame and Legs; Metal profile, black stained  
2 Fronts and sides: Black painted mesh metal sheet,  
Table-Top, Back-Panel and Shelves: Melamine veneered particle board  
W: 138 D: 45 H: 55 cm



**MOKA TV UNIT**  
MKA01TV197  
Frame & Top: Melamine veneered particle board  
Legs: Solid wood  
Handles; Metal Color: Antique bronze  
Function; 2 drawers  
W: 138 D: 44 H: 49 cm



**PERLA TV UNIT**  
PRL01TV297  
Frame & Top: Melamine veneered particle board  
Legs: w/base, Handles; Metal  
Function; 3 drawers  
W: 145 D: 48 H: 47 cm



**LAVORO TV TABLE**  
LVO11TV443  
Shelves; Melamine veneered particle board, Color: Picasso Retro patterned  
Frame & Legs; Electrostatic painted profile, black stained (Code.218)  
W: 137 D: 45 H: 58 cm  
**LAVORO ADD. DRAWER FOR TV TABLE**  
LVO11CU443  
Melamine veneered particle board, Color: Picasso Retro patterned  
Handle: Artificial leather  
W: 60 D: 40 H: 26 cm



**ISADORA TV UNIT**  
ISD01TV799  
W: 138 D: 45 H: 55 cm

# CONSOLE TABLES

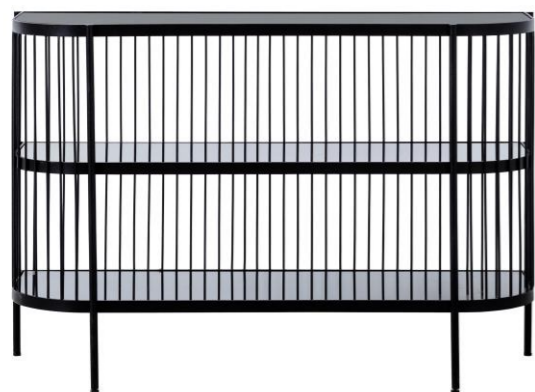
Console Tables are naturally narrow, roughly as tall as a regular table or desk. You can use it mostly as an entry table in hallway, that provides a strong first impression for guests entering your home. It is also possible to create a Home Office with a slim-designed chair, which won't take up extra space.

You can also place it against the back of a sofa to use as a sofa table. It only should be no taller than the sofa back and the width shouldn't be longer than the sofa.

For any place except the back of the sofa, the height and width of the console table can be whatever suits the place best.

An ottoman under your console table can be useful since the space in the entryway is often limited.





**AZURA CONSOLE TABLE**  
AZR01DR876  
Frame & Legs: Round metal profile-bars, black stained  
Shelves: Smoked mirror  
W: 113 D: 37 H: 74 cm



**LIVELLO CONSOLE TABLE**  
LVL01DR864  
Frame; Textured melamine  
Top: High gloss scratch resistant black panel veneered MDF  
Legs: Mat black stained solid beech wood  
Function; Soft-closing system  
W: 117 D: 46 H: 80 cm



**VICTORIA CONSOLE TABLE**  
VIC01DR867  
Top, Frame & Front: Solid oak veneered MDF  
Color: Smooth antique white, aged corners  
Legs: Solid wood, antique white stained, Handles: Aged brass  
Drawer w/ soft closing system  
W: 110 D: 35 H: 80 cm



**LIONI CONSOLE TABLE**  
LIO11DR218T777  
Frame & Legs; Electrostatic painted profile, black (Code.2128)  
Top; 6 mm extra clear tempered glass  
Bottom Top; 6 mm aged mirror  
W: 140 D: 40 H: 74 cm



**VOLLA CONSOLE TABLE**  
VOL11KT756T776  
Frame & Legs; Electrostatic painted profile, bronze stained (Code.756)  
Top; Bronze reflected glass  
Bottom Top; Walnut veneered, natural stained  
W: 140 D: 35 H: 81 cm



**CARLO CONSOLE TABLE**  
CRL01DR726  
Frame & Top: Solid oak veneer  
Color: Walnut stained  
Legs: Solid wood, walnut stained  
Decorative; Soft corners  
W: 130 D: 40 H: 85 cm



**LIBRO CONSOLE TABLE**  
 LBR01DR723  
 Frame & Top: Melamine  
 veneered particle board  
 Handles; Metal  
 Function; 2 drawers  
 W: 130 D: 40 H: 85 cm



**GAYDA CONSOLE TABLE**  
 GYD11DR652  
 Top & Fronts; Solid pine veneer, natural stained  
 Handles; Aged handles in gold color  
 Legs; Solid wood, natural stained  
 Decorative; Embossed decorative figures on fronts  
 W: 155 D: 4 H: 90 cm



**SIANO CONSOLE TABLE**  
 SIA01DR218T716  
 Frame & Legs; Electrostatic painted profile, black stained  
 Top; 686 Stone-look laminate  
 W: 130 D: 40 H: 74 cm



**PERLA CONSOLE TABLE**  
 PRL01DR297  
 Frame & Top; Melamine veneered particle board  
 Handles; Metal  
 Function; 4 drawers  
 W: 120 D: 45,4 H: 80 cm



**LIBRO CONSOLE TABLE**  
 LBR01DR723  
 Frame & Top; Melamine veneered particle board  
 Handles; Metal  
 Function; 2 drawers  
 W: 130 D: 40 H: 85 cm

# COFFEE, SIDE & NESTING TABLES

Coffee table is the piece complements your other furniture. It combines form and function, style and service.

Style, shape, sizes and function should be considered in relation to the sitting group/items. It should be about two-thirds the length of your sofa and a touch lower than it or the same height.





**PATRIZIA COFFEE TABLE**  
PTR13SH791  
W:100 D:100 H:29 cm



**BRANKA COFFEE TABLE**  
BRN02SH665  
Made of solid wood (fir)  
Wire brushing on surfaces  
Water based polish on all surfaces  
W:110 D:80 H:41 cm



**BRANKA SIDE TABLE**  
BRN01SH665  
Made of solid wood (fir)  
Wire brushing on surfaces  
Water based polish on all surfaces  
W:50 D:46 H:50 cm



**ELEGANT COFFEE TABLE**  
ELG03SH512  
Top: Melamine veneered particle board  
Legs: Solid wood, brown stained  
W:94 D:94 H:37 cm



**ELEGANT SIDE TABLE**  
ELG01SH512  
Top: Melamine veneered particle board  
Legs: Solid wood, Brown stained  
W:46 D:46 H:57 cm



**PATRIZIA COFFEE TABLE**  
PTR13SH791  
Shape: Square  
Frame Particle board veneered with textured melamine, Table-Top: Movable bronze mirror and panel, Legs: Solid wood, brown stained  
Function: Hidden wheels to move easily, 2 storage boxes under wood parts.  
W:100 D:100 H:29 cm



**PATRIZIA SIDE TABLE**  
PTR01SH791  
Shape: Rectangle  
Table-Top is veneered with textured melamine  
Legs: Solid wood, brown stained  
W:55 D:55 H:60 cm



**PATRIZIA COFFEE TABLE**  
PTR12SH791  
Shape: Rectangle  
Frame veneered with textured melamine  
Table-Top: movable bronze mirror  
Legs: Solid wood, brown stained  
W:90 D:63 H:27 cm



**PATRIZIA NESTING TABLE**  
PTR05SH791  
Shape: Rectangle  
Table-Top is veneered with textured melamine  
Legs: Solid wood, brown stained  
W:62 D:40 H:55 cm



**CARPI COFFEE TABLE**  
CAI09SH761  
Shape: Oval  
Frame: American walnut veneer, natural stained Code (.761)  
Legs: Solid wood, natural stained  
W: 57 D: 57 H: 50 cm



**CARPI SIDE TABLE SET**  
CAI04SH761, W: 55D: 55H: 55 cm  
CAI01SH761, W: 45D: 45H: 45 cm  
Shape: Round  
Frame: American walnut veneer, natural stained (.761)  
Legs: Solid wood, natural stained



**TRENTO COFFEE TABLE**  
TRE06SH756T761  
Frame: Electrostatic painted profile  
Color: Bronze  
Table Top: Walnut veneered, natural stained  
W: 95 D: 95 H: 45 cm



**TRENTO SIDE TABLE**  
TRE04SH218T761, W: 55D: 55H: 55 cm  
Shape: Round  
Frame: American walnut veneer, natural stained Code (.761)  
Legs: Electrostatic painted profile, bronze stained (Code.756)



**GLORIA COFFEE TABLE**  
GLR03SH861  
Frame & Doors: Solid oak veneered 18mm MDF  
Color: Black lacquered, aged corners  
Top: Solid fir 30mm, charred and natural stained  
Legs: Solid wood, Handles: Aged metal  
Function: 2 Drawers, w/Soft closing system  
W: 100 D: 100 H: 40 cm



**GLORIA SIDE TABLE**  
GLR01SH860  
Frame & Doors: Solid oak veneered 18mm MDF  
Color: Black lacquered, aged corners  
Top: Solid oak 18mm, black stained  
Legs: Solid wood, black stained  
W: 50 D: 50 H: 55 cm



**VICTORIA COFFEE TABLE**  
VIC03SH867  
Top, Frame & Front: Solid oak veneered MDF  
Color: Smooth antique white, aged corners  
Legs: Solid wood, antique white stained  
Handles: Aged brass;  
Function: 2 Drawers, w/Soft closing system  
W: 100 D: 100 H: 40 cm



**VICTORIA SIDE TABLE**  
VIC01SH866  
Top, Frame & Front: Solid oak veneered MDF  
Color: Smooth antique white, aged corners  
Legs: Solid wood, antique white stained  
W: 50 D: 50 H: 55 cm



**GAYDA COFFEE TABLE**  
GYD1SH652  
Shape: Square  
Frame & Legs: Solid pine and veneer  
Legs: Solid wood  
W: 100 D: 100 H: 50 cm



**GAYDA SIDE TABLE**  
GYD12SH652  
Shape: Square  
Frame & Legs: Solid pine and veneer  
Legs: Solid wood  
W: 57 D: 57 H: 50 cm



**CARLO COFFEE TABLE**  
CRL03SH726  
Shape: Square  
Table Top: Solid oak veneered MDF  
Legs: Solid wood  
W: 100 D: 100 H: 45 cm



**CARLO SIDE TABLE**  
CRL01SH726  
Shape: Square  
Table Top: Solid oak veneered MDF  
Legs: Solid wood  
W: 65 D: 65 H: 65 cm



**ASTORIA COFFEE TABLE**  
AST03SH673  
Shape: Square  
Frame; Textured melamine  
Top; Grey-brown marble-look laminate  
Legs: Solid wood, brown stained  
W: 90 D: 90 H: 37 cm



**ASTORIA SIDE TABLE**  
AST01SH671  
Frame & Top; Textured melamine  
Legs: Solid wood, brown stained  
W: 60 D: 50 H: 50 cm



**SANTINO COFFEE TABLE**  
SNT02SH687  
Shape: Square  
Frame; Textured melamine  
Legs: Bended iron, black stained  
W: 90 D: 90 H: 39 cm



**SANTINO SIDE TABLE**  
SNT01SH687  
Shape: Square  
Frame; Textured melamine  
Legs: Bended iron, black stained  
W: 50 D: 50 H: 50 cm







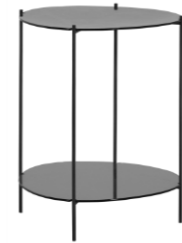
**ANCHOR COFFEE TABLE**  
 ANC03SH218T764  
 Consists of 4 square modules;  
 2 pcs. W: 50 D: 50 H: 25 cm  
 2 pcs. W: 50 D: 50 H: 30 cm  
 Frame: 15x15mm electrostatic painted profile  
 Table-Top: Smoked mirror  
 Base: 5 cm panel



**NATURA NESTING TABLE**  
 NTR05SH848  
 Shape: 1xRectangle, 2xSquare  
 Table Top: 18mm scratch resistant high gloss panel, black  
 Bottom Top: 30mm MDF, mat black stained  
 Legs: Electrostatic painted 20\*20 mm profile, black stained  
 W: 38 D: 38 H: 54, W: 61 D: 20 H: 48, W: 30 D: 30 H: 41 cm



**KYOTO COFFEE TABLE SET**  
 Legs: Round metal profile-bars with dia. 10mm, bronze stained  
  
 Table-Top: **Bronze** mirror (Code.763)  
 KYT07SH756T763, W:79 D:77 H:36 cm  
 KYT09SH756T763, W:79 D:77 H:31 cm  
  
 Table-Top: **Smoked** mirror (Code.764)  
 KYT07SH756T764, W:79 D:77 H:36 cm  
 KYT09SH756T764, W:79 D:77 H:31 cm



**KYOTO SIDE TABLE**  
 Legs: Round metal profile-bars with dia. 10mm, bronze stained  
  
 Table-Top: **Bronze** mirror (Code.763)  
 KYT04SH756T763, W:51 D:50 H:36 cm  
  
 Table-Top: **Smoked** mirror (Code.764)  
 KYT04SH756T764, W:51 D:50 H:36 cm



**RIANO COFFEE TABLE SET (2 pieces)**  
 RIA06SH218T764  
 Shape: Round  
 Frame & Legs; Electrostatic painted profile, black (Code.218)  
 Table-Top: Smoked glass  
 Ø 90 H: 45 cm  
 Ø 70 H: 35 cm



**NATURA SOFA TABLE**  
 NTR07SH849  
 Shape: Rectangle  
 Table Top: 6mm tempered glass, black stained  
 Legs: Electrostatic painted profile, black stained  
 W: 45 D: 30 H: 57 cm



**LANTANA COFFEE TABLE**  
 LNT02SH800  
 Shape; Rectangle  
 Table-top; Bronze glass,  
 Shelf: Marble look laminate,  
 Frame & Legs; Electrostatic painted profile, color; bronze  
 W: 120 D: 80 H: 34 cm



**LANTANA NESTING TABLE SET**  
 LNT05SH800, 3 pieces  
 Table-top; Bronze glass, Shelf: Marble look laminate, Frame & Legs;  
 Electrostatic painted profile, bronze  
 W: 60 D: 40 H: 52 cm



**LANTANA COFFEE TABLE**  
 LNT03SH800  
 Shape; Square  
 Table-top; Bronze glass,  
 Shelf: Marble look laminate,  
 Frame & Legs; Electrostatic painted profile, color; bronze  
 W: 100 D: 100 H: 34 cm



**LIVELLO NESTING TABLE**  
 LVL05SH854  
 Shape: Round  
 Table Top: 6mm tempered glass, black stained  
 Bottom Top: 18mm MDF, mat black stained  
 Legs: Electrostatic painted 60\*20 mm profile, black stained  
 Ø 57 H: 56, Ø 50 H: 51, Ø 42 H: 46 cm



**KYOTO COFFEE TABLE SET  
 &  
 SIDE TABLE**

KYT07SH756T763, W:79 D:77 H:36  
 KYT09SH756T763, W:79 D:77 H:31  
 KYT04SH756T763, W:51 D:50 H:36



**LIONI COFFEE TABLE**  
LIO02SH218T762  
Shape: Rectangle  
Frame: Electrostatic painted profile,  
Color: Black (Code:218)  
Table Top: 6 mm extra clear tempered glass  
W: 110 D: 70 H: 43 cm



**LIONI SIDE TABLE**  
LIO04SH218T762  
Shape: Square  
Frame: Electrostatic painted profile,  
Color: Black (Code:218)  
Table Top: 6 mm extra clear tempered glass  
W: 50 D: 50 H: 60 cm



**SIANO COFFEE TABLE, Square**  
SIA03SH218T791  
Shape: Square  
Frame: Texture veneered melamine  
Legs: Electrostatic painted profile, black  
stained  
W: 90 D: 90 H: 43 cm



**VARESE SOFA TABLE**  
VAR07SH756T763  
Shape: Round  
Frame & Legs: Electrostatic painted profile,  
bronze (Code:756)  
Top Shelf: 6 mm bronze reflected tempered glass  
W: 35 D: 35 H: 60 cm



**PURE COFFEE TABLE**  
PUR03SH739  
Frame, Shelves & Fronts: Textured melamine  
veneered, white  
Table Top: Textured melamine veneered,  
walnut  
Function: 2 drawers Handles: Metal  
W:90 D:90 H:36 cm



**PURE COFFEE TABLE**  
PUR01SH739  
Frame, Shelves & Fronts: Textured melamine  
veneered, White, Table Top: Textured  
melamine veneered, walnut  
Sides: Country house barn door-look  
w/wheels  
W:90 D:90 H:36 cm



**ISADORA COFFEE TABLE**  
ISD03SH799  
Frame: Metal profile  
Table-Top: Textured melamine veneered  
particle board  
Shelf: Black painted mesh metal sheet,  
W:90 D:90 H:37 cm



**ISADORA SIDE TABLE**  
ISD01SH799  
Frame: Metal profile  
Table-Top: Textured melamine veneered  
particle board, Shelf and sides: Black painted  
mesh metal sheet,  
w/ wheels  
W:39 D:39 H:46,5 cm



**MOKA COFFEE TABLE**  
MKA03SH197  
Frame & Top: Melamine veneered particle  
board  
Legs: Solid wood  
Handles: Metal Color: Antique bronze  
Function; 2 drawers  
W: 138 D: 44 H: 49 cm



**MOKA COFFEE TABLE**  
MKA01SH197  
Frame & Top: Melamine veneered particle  
board  
Legs: Solid wood  
Handles: Metal Color: Antique bronze  
W:50 D:44 H:49 cm



# BOOKCASES & SHELVING

Mixing bronze or chrome finish of the frame with warm walnut tones, clear glass, and retro veneers, Volla is perfect for modern, contemporary, and glam aesthetics.

The strikingly modern silhouette of Volla brings an impressive look to any room. Cut the clutter in your living- and bedroom or combine with your sideboards in your dining room.





# VOLLA

**VOLLA BOOKCASE**  
VOL02KT756T776

Frame & Legs; Electrostatic painted profile,  
bronze stained (Code.756)  
Top & Middle Shelves: Bronze reflected glass  
Bottom Shelf: Walnut veneered,  
natural stained (Code.761)  
W: 94 D: 35 H: 194 cm



# ISADORA

## ISADORA BOOKCASE

ISD01KT799  
Frame: Metal profile  
Shelves: Melamine veneered particle board  
Fronts: Black painted mesh metal sheet,  
W:96 D:40 H:187 cm



## ISADORA DESK

ISD01CM799  
Frame: Metal profile  
Shelves: Black painted mesh metal sheet,  
Table-Top: Melamine veneer,  
1xDrawer  
W: 130 D: 65 H: 75cm



# LAVORO

Bookcases aren't just for holding books. They're also perfect for staging framed family photos, keeping baskets filled with accessories, and putting plants on display.

Lavoro is made of metal frame with electrostatic paint, shelves are made of retro-patterned melamine board. Ideal for the living room, study, kitchen, and office, the simple style can fit in any decor.



Place Lavoro TV Unit in living room as shelf for your books and magazines, your entryway as a shoe cabinet, or any where for anything from media to decor.

**LAVORO TV TABLE**  
LVO11TV443  
W: 137 D: 45 H: 58 cm



## Lavoro Bookcase

**LAVORO BOOKCASE**  
LVO12KT443  
Shelves; Melamine veneered particle board,  
Color: Picasso Retro patterned  
Frame & Legs; Electrostatic painted profile, black stained (Code.218)  
W: 146nD: 37 H: 204 cm



## Lavoro X-Bookcase

**LAVORO BIG BOOKCASE**  
LVO13KT443  
Shelves; Melamine veneered particle board,  
Color: Picasso Retro patterned  
Frame & Legs; Electrostatic painted profile, black stained (Code.218)  
W: 137 D: 31 H: 200 cm



## Lavoro Open-Shelf

**LAVORO OPEN WARD/SHELF**  
LVO02GV443  
Shelves; Melamine veneered particle board,  
Color: Picasso Retro patterned  
Frame & Legs; Electrostatic painted profile, black stained (Code.218)  
W: 50 D: 55H: 211



## Lavoro Ladder Bookcase

**LAVORO LADDER BOOKCASE**  
LVO05KT443  
Shelves; Melamine veneered particle board,  
Color: Picasso Retro patterned  
Frame & Legs; Electrostatic painted profile, black stained (Code.218)  
W: 120 D: 35H: 78



## Sanluca Bookcase

Sanluca appeals to anyone who looks for a modern-simple design in their home. Bookcase combines its textured walnut veneer with the calming anthracite color.

**SANLUCA BOOKCASE**  
SNL01KT795  
Made of mat anthracite lacquered MDF  
Shelves: Textured melamine veneered particle board, Color: Walnut  
Handles & Legs; Solid wood, brown  
Functions; 2 drawers w/ soft closing  
W:90 D:40 H:206 cm



## Pure Bookcase

Pure blends country styling with a touch of the metropolitan. The white color scheme is finished with light walnut color on the shelves and top.

**PURE BOOKCASE**  
PUR01KT739  
Frame & Fronts: Textured melamine veneered, white  
Shelves & Table Top: Textured melamine veneered, walnut  
Fronts: Country house barn door  
Handles: Metal  
W: 95 D: 37 H: 186 cm



## Brera Bookcase

Incorporating modern styling and obtrusive touches allowing the character of the individual to shine through.

**BRERA BOOKCASE**  
BRR01KT453  
Frame, & Shelves: Textured melamine veneered particle board,  
Color: Walnut and black Legs: Electrostatic painted, bended iron  
W: 75: 35 H: 177 cm



## Blush Bookcase

Where the soft beige and white come together with the elegant rose accessories on the legs

**BLUSH BOOKCASE**  
BLU01KT442  
Legs: Solid wood, white stained w/rose accessory  
Frame: Melamine veneered particle board, kashmire  
Shelves, Melamine veneered, white  
W: 75: 35 H: 177 cm





## Libro Bookcase

**LIBRO BOOKCASE**  
LBR01KT724  
Made of textured melamine veneered particle board, Color: Back-panels; black, Front and side panels; bordeaux  
Legs: Metal, black stained  
W: 40 D: 130 H: 190 cm



## Coco Bookcase

**COCO BOOKCASE**  
COC01KT297  
Frame, & Shelves: Textured melamine veneered particle board, Color: White  
Handles: Metal, White stained  
W: 89 D: 40 H: 185 cm



## Moka Bookcase

**MOKA BOOKCASE**  
MKA01KT197  
Made of melamine veneered particle board, color; dark brown  
W: 93 D: 40 H: 240 cm



## Iona Bookcase

**IONA BOOKCASE**  
ION01KT297  
Made of melamine veneered particle board, color; white  
W:80 D:33 H:200 cm



**GRAY BOOKCASE**  
GRY01KT655  
Frame: Textured melamine veneered particle board  
Legs: Solid wood in gray stain  
W:100 D:45 H:161 cm



# OFELIA

Incorporating a soft ash-like veneer and the contrasting doors crafted from MDF printed with soft touch technique, Ofelia brings a sense of lightness and adds personality to everyday life.



**OFELIA CABINET**

OFL01DL461

Made of melamine veneered particle board,

Fronts: MDF printed with soft touch technique

Color: Frame and shelf, walnut, Fronts; Multi-colored

Legs: Solid wood, brown stained, with decorative metal part in brass color

W: 40 D: 130 H: 190 cm





# PRETORIA

Pretoria has been designed for those who like to incorporate a feeling of nature around the home. The storage bench is a combination of both seating and storage solution and that makes it a versatile addition to small spaces.

It is irresistibly full of life, employing a mix of wood, spirit of nature, and fabric and brings warmth of its character into your home.

## PRETORIA CABINET PTO01DL735

Made of melamine veneered particle board,  
Fronts: MDF printed with soft touch technique  
Color: Frame and shelf; walnut, Fronts; Multi-colored  
Legs: Solid wood, brown stained, with decorative metal part in brass color  
W:84 D:40 H:85 cm



## PRETORIA STORAGE BENCH PTO11AP735AS22

Made of melamine veneered particle board,  
Fronts: MDF printed with soft touch technique  
Color: Frame and shelf; walnut, Fronts; Multi-colored  
Legs: Solid wood, brown stained  
W:103 D:44 H:65 cm



# FINISHINGS

Note: Due to differences in photographic and printing processes, tone of the finishes shown may vary from actual look.

## BRANKA



Solid fir

## GAYDA



Solid pine + natural wood veneer

## CARLO



Solid oak veneer, Brown stained

## ELEGANT



Plain-surface melamine veneer

## VICTORIA



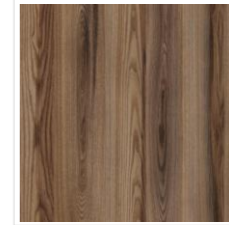
Solid oak veneer, Antique white stained

## PATRIZIA



Textured melamine veneer

## SANTINO



Textured melamine veneer

## ASTORIA



Textured melamine veneer

## NATURA



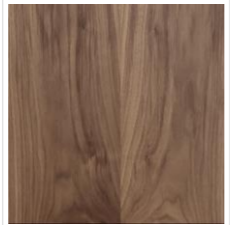
Solid oak veneer, black stained

## CARMEN



Textured melamine veneer

## LANTANA



Natural walnut veneer, natural stained

## GLORIA



Solid oak veneer, black stained



Antique White stain with aged corners



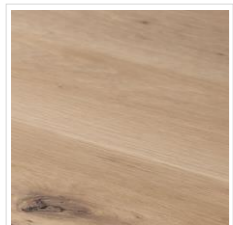
4mm bronze mirror



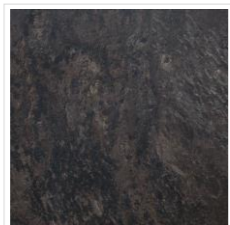
Dark-brown marble-look laminate



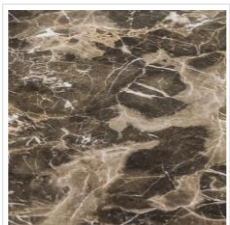
Stone-look laminate



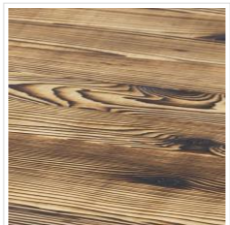
Solid fir, stained with teak oil



Dark-brown marble-look laminate



Compact laminate, marble design



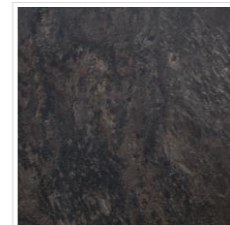
30mm solid fir, charred and natural stained

## SIVA



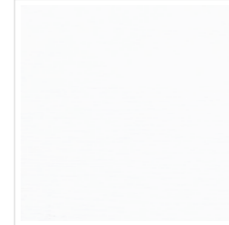
Textured melamine veneer

## HOOK, BROWN



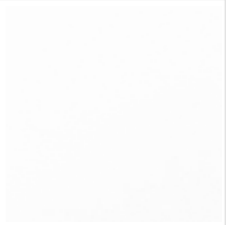
Dark-brown marble-look laminate

## HOOK, WHITE



White laminate with textured surface

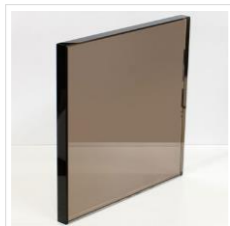
## PURE



Plain-surface melamine veneer in white



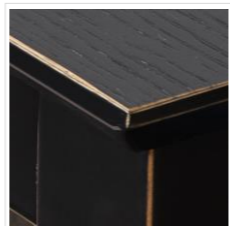
Rattan, Color: Black



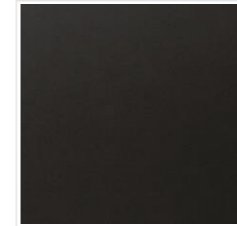
6mm tempered bronze glass



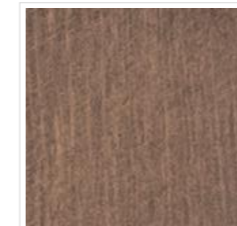
4mm tempered bronze glass



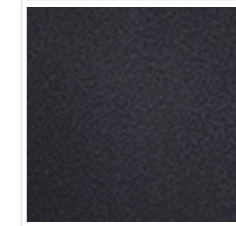
Black stain with aged corners



Mat anthracite stained MDF



Base & Legs: Solid beech in brown stain



Base&Legs: Solid beech in anthracite stain



Tops: Textured melamine veneer

# FINISHINGS

Note: Due to differences in photographic and printing processes, tone of the finishes shown may vary from actual look.

## GRAY



Textured melamine veneer



Light gray stained MDF

## ARCADIA



Textured melamine veneer, white



Legs & Tops: Textured melamine veneer

## THERESA



Matt, off-White PVC



Solid walnut, natural brown stained

## LIBRO

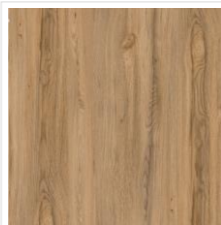


Plain surface melamine veneer, bordeaux

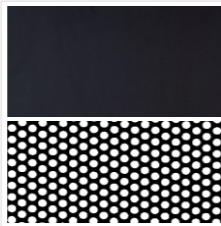


Plain surface melamine veneer, black

## ISADORA

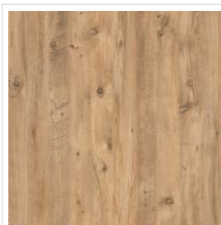


Textured melamine veneer



Frame: Painted metal Shelves Black painted mesh metal sheet

## PRETORIA



Textured melamine veneer

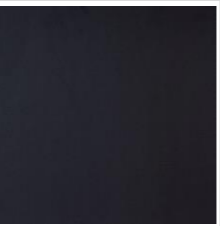


Fronts: Printed MDF, Africa

## LAVORO



Plain-surface melamine veneer, Picasso



Frame: Electrostatic painted profile in black

## OFELIA



Textured melamine veneer

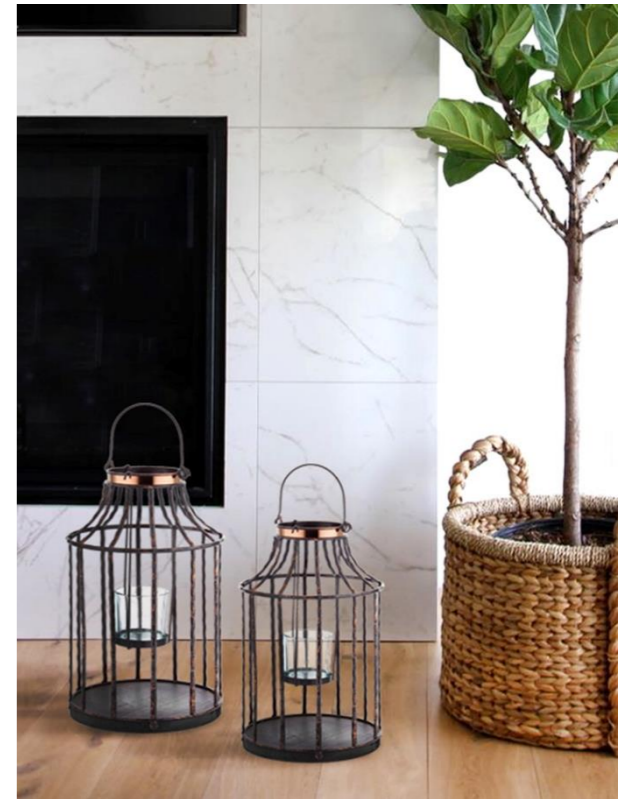
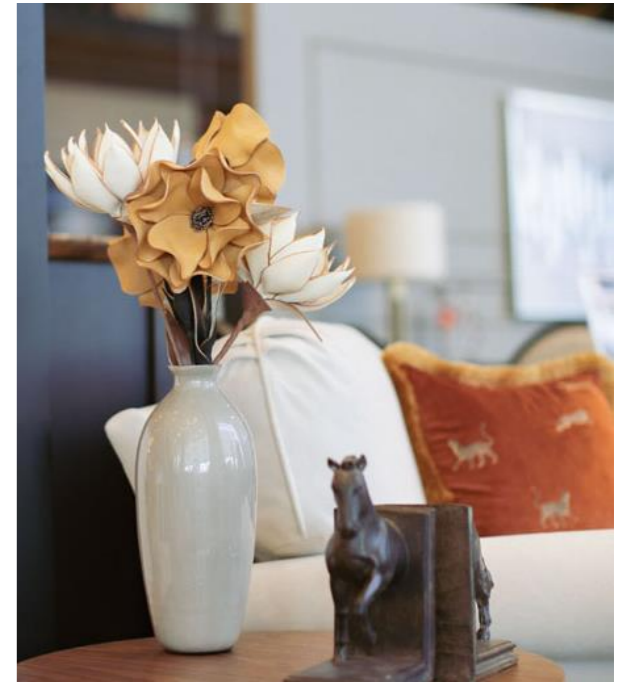


Fronts: Printed MDF, Vintage



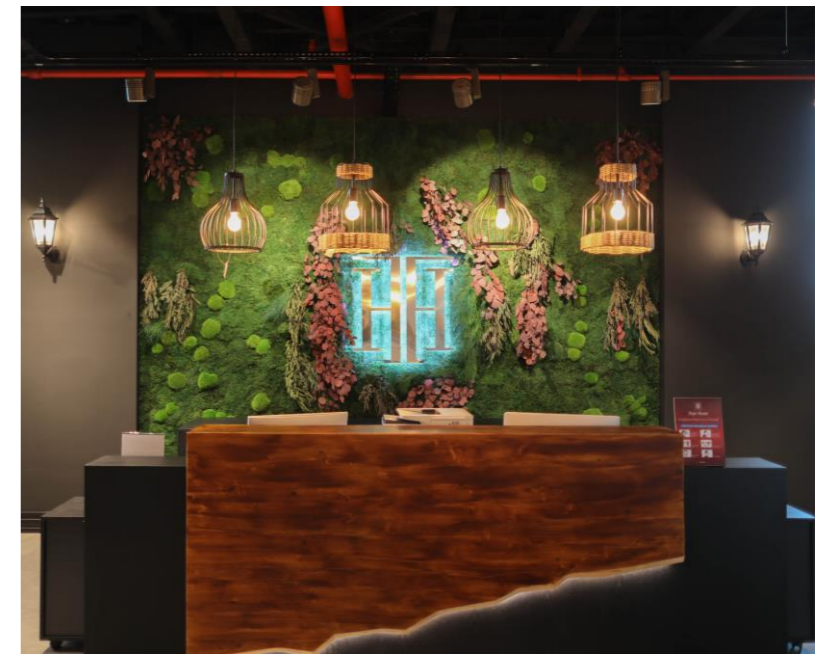
We have all  
pieces you  
need to

# COMPLETE YOUR HOME



# NEW OPENINGS 2020-2021

## KENTPARK, ANKARA



# NEW OPENINGS 2020-2021

EGE PERLA,  
İZMİR



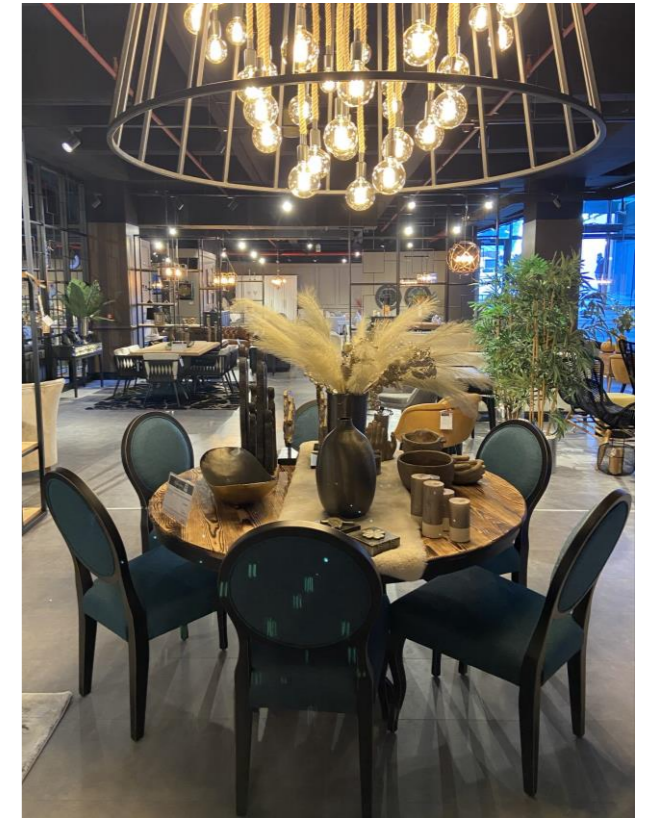


# NEW OPENINGS 2020-2021



# NEW OPENINGS 2020-2021

BUYAKA,  
ISTANBUL



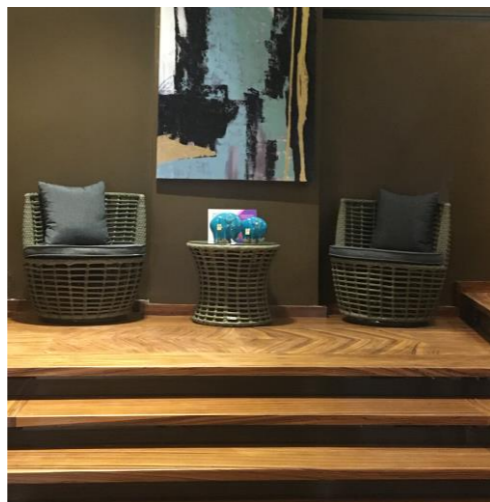
# NEW OPENINGS 2020-2021

365 AVM,  
ANKARA



# NEW OPENINGS 2020-2021

## MODOKO, ISTANBUL



## MASKO, ISTANBUL

# VISIT US

## AT OUR SHOWROOMS & WEB-SITE

To shop with confidence

To see our extensive collections both in contemporary and country styles

To benefit from our exceptional free design service by professionals

To benefit the best quality at the lowest possible price, always.



**ANKARA, Bilkent**  
Ortadoğu Mah. Bilkent Center,  
No: 16 Bilkent, Çankaya  
Phone: +90 312 266 12 60

**ANKARA, Batıpark**  
F.S.M Blv İstanbul Yolu 9.km.  
1730 cd. 2/a Yenimahalle  
Phone: +90 312 397 38 98

**İSTANBUL, Skyland**  
Skyland HOM Design Center  
Huzur Mh. Cendere Cd. No: 114 Sarıyer  
Phone: +90 212 809 13 33

**İSTANBUL, Buyaka**  
Fatih Sultan Mehmet Mah.  
Poligon Cad. No:8 E/2, Ümraniye  
Phone: +90 216 784 01 10

**İZMİR, Balçova**  
Kipa AVM İnciraltı Mh.Mithatpaşa  
Cd. No:1462/2b Balçova  
Phone: +90 232 277 26 95

**İZMİR, Gaziemir**  
Akçay Cad. No: 20  
Gaziemir  
Phone: +90 232 220 30 35-36-37

**ANKARA, 365**  
Birlik Mah. 428. Cad. 365 AVM  
No: 41/B2-10, 06610 Çankaya  
Phone: +90 312 450 00 82-83-84

**ANKARA, Beytepe Outlet**  
Beytepe Köyü yolu No:5  
Bilkent, Çankaya  
Phone: +90 312 266 72 14

**İSTANBUL, Masko**  
Masko Mobilyacılar Çarşısı 16-B  
No:35 34490, İkitelli  
Phone: +90 212 809 13 33

**İSTANBUL, İdealtepe**  
Altayçeşme Mh İstiklal Cad.  
No: 122 Maltepe/İstanbul  
Phone: +90 216 459 58 41

**İZMİR, Egeperla**  
Çınarlı Mah. Ozan Abay Cd. No:8  
Ege Perla Avm Kat:2/ Konak / İzmir  
Phone: +90 232 6831011- 232 6831013

**ESKİŞEHİR**  
Batıkent Mah Bademli Yol Sk.  
No:6 Tepebaşı  
Phone: +90 222 325 01 41

**ANKARA, Kentpark**  
Mustafa Kemal Mah. Eskişehir Yolu  
7. Km No: 164/1B-34 Çankaya  
Phone: +90 312 2199765-66

**ANKARA, Panora**  
Turan Güneş Bulvarı Panora AVM,  
No:182, Kat 1/195-199, Oran, 06550  
Phone: +90 312 494 05 23

**İSTANBUL, Ataköy**  
Galeria AVM Ataköy, Sahil Yolu  
No: C-1 Ataköy  
Phone: +90 212 560 85 84

**İSTANBUL, Modoko**  
Yukarı Dudullu, Mah. 2. Cadde  
No: 253, 34775/ Ümraniye  
Phone: +90 216 540 4066

**İZMİR, Egepark**  
Mavişehir AVM, 2040 Sokak, No:104/142  
35540  
Phone: +90 232 504 88 48

**K.K.T.C, Lefkoşa**  
Ali Rıza Efendi Cad. No: 27  
Ortaköy Lefkoşa  
Phone: +90 392 228 31 95

[www.tepehome.com.tr](http://www.tepehome.com.tr)



Headquarter

TEPE HOME MOBİLYA VE DEKORASYON ÜRÜNLERİ SANAYİ VE TİCARET AŞ.  
Address : Beytepe Köyü Yolu No:5, Bilkent, 06800 Çankaya-Ankara / TÜRKİYE  
Phone: +90 312 266 47 80 (Monday – Friday: 8 a.m. to 6 p.m. GMT+3)  
E.mail: export@tepehome.com.tr demet.bozkurt@tepehome.com.tr



Beytepe Koyu Yolu No:5  
06800, Bilkent Ankara/TURKIYE  
[www.tepehome.com.tr](http://www.tepehome.com.tr) • [export@tepehome.com.tr](mailto:export@tepehome.com.tr)